

2017 Compete USA Competition

Hosted By:



Sunday, October 22, 2017

Entry Deadline: Friday September 22, 2017

For a complete set of rules visit our website
www.swancityiceskaters.org

For Questions Please Contact: Jillian Blackburn at (920) 318- 6203 or via
email at rodeoash@yahoo.com

Beaver Dam Family Center
609 Gould St.
Beaver Dam, WI 53916

ELIGIBILITY RULES FOR PARTICIPANTS

The competition is open to ALL skaters who are current eligible (ER 1.00) members of either the Learn to Skate USA program and those who are full members of U.S. Figure Skating. To be eligible, skaters must have submitted a membership application or be a member in good standing. Members of other organizations are

eligible to compete but must be registered with Learn to Skate USA or a member club. There will be no more than six competitors maximum in an event and all six should receive an award.

Eligibility and Test Requirements:

Eligibility will be based on skill level as of closing date of entries. All **Snowplow Sam and Basic Skills 1-6** skaters must skate at highest level passed or one level higher and NO official U.S. Figure Skating tests may have been passed, including Moves in the Field or individual dances.

For the **Pre-free skate, free skate 1-6, test track and Well Balanced levels**, eligibility will be based only upon highest free skate test level passed (Moves in the Field test level will not determine skater's competitive level). Skaters may skate at highest level passed OR one level higher, but not both levels in the same event during the same competition. Skaters may not compete at more than one level in the same type event at the same competition.

ENTRIES AND FEES

- **\$55.00 for the first event**
- **\$15.00 for each additional event**
- All entries must be registered online no later than **Friday September 22, 2017**. Late entries will be accepted only if the limit has not been reached, at the discretion of the organizers and will be subject to a **\$20 late fee**.
- **NO refunds after closing date** unless event is canceled by Swan City Ice Skaters or with a written medical excuse from your physician.
- An online entry system with secure credit card payment is available for this year's competition. The online registration system, Entryeeze, can be accessed via a link on www.swancityiceskaters.org . Click on the COMPETITION tab.

AWARDS - Results will be posted in the lobby area after skaters have skated their event. It may take anywhere from 5-20 minutes to post the results. Everyone will receive an award. All events will be final rounds. ALL awards will be made at appropriate times throughout the competition.

SCHEDULE OF EVENTS - Skaters names and event times, along with directions to the rink will be posted on the Swan City Ice Skaters web site, www.swancityiceskaters.org one week prior to competition. All skaters should arrive at the rink 45 minutes prior to their scheduled event. All competitors must check in at the registration desk, which will be located in the lobby area.

PRACTICE ICE - Practice ice will be available first come first served basis Sunday morning. Practice ice will be sold for \$10 per 20 min. A maximum of 20 skaters will be allowed on the ice during any one session. You may sign up for **NO MORE THAN TWO SESSIONS**.

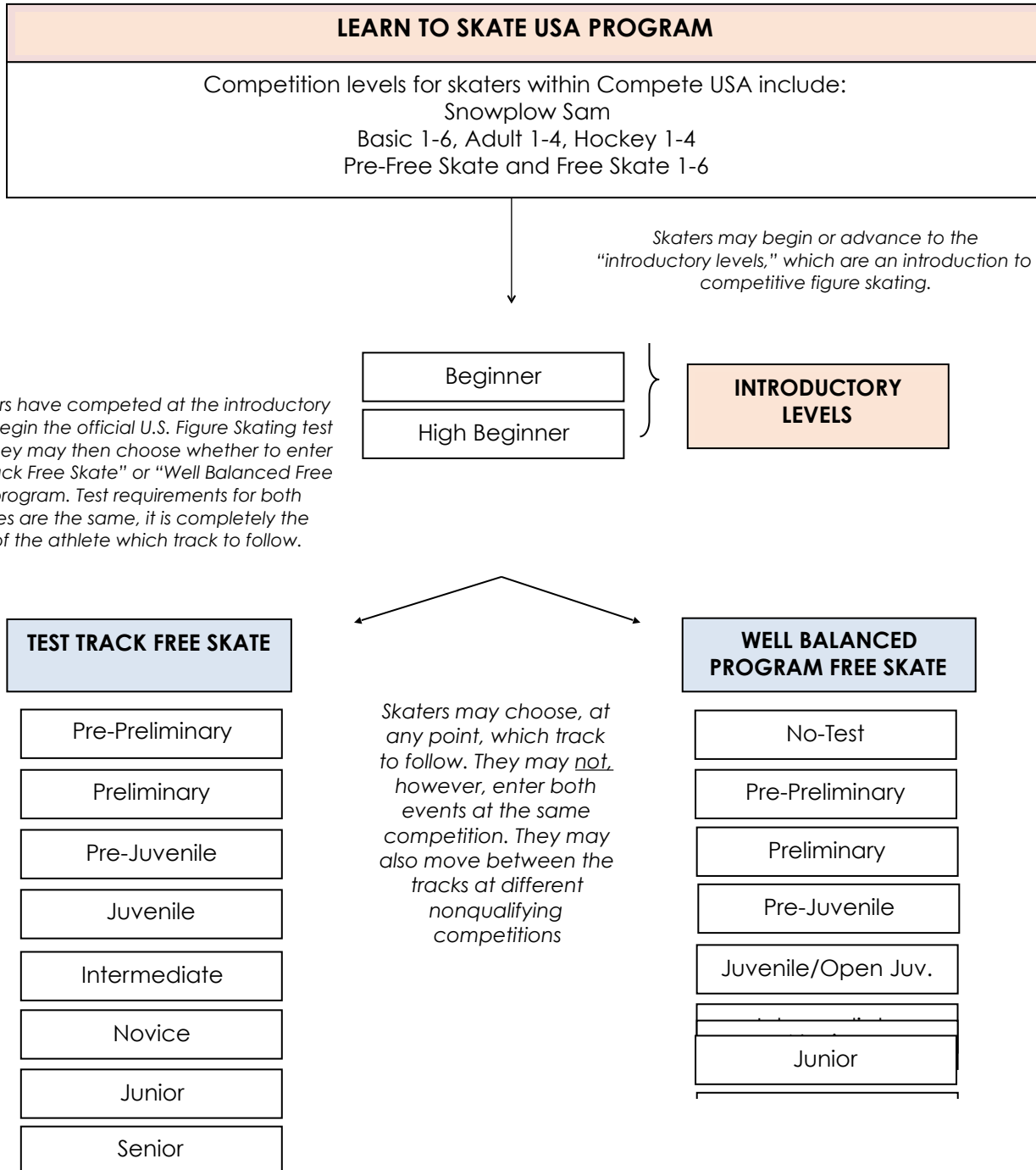
MUSIC - The music for all free skating programs must be provided on CDs by the skater. CDs should be clearly marked with the name of the skater, event entered and length of music (not skating time). Only one piece of music per CD. Competition music is to be turned in at the time of registration. Please remember to pick up your music, SCIS will not return any music left at the rink. Time duration is always +/- 10 seconds.

Note: This is a Compete USA Competition set up under the guidelines of the Compete USA Competition Manual. Judges **WILL NOT** be Official U.S. Figure Skating Judges. *The Compete USA Competition may use qualified skaters and/or instructors who are 16 years of age or older and/or persons who are trial judging for appointments. This should be an unbiased group. See Compete USA Competition Manual.*



ILLUSTRATION OF THE PROGRESSION THROUGH THE LEVELS OF U.S. FIGURE SKATING

Singles athletes begin with the Learn to Skate USA program, then progress to the "introductory levels," and finally choose whether to follow the test track or Well Balanced program category. Athletes may choose to move between test track and Well Balanced program at any point.





EVENT: Basic Elements Event: SNOWPLOW SAM - BASIC 6

Format choice of the host: Each skater will perform each element when directed by a judge or referee or have the option to perform one element at a time in the order listed below (no excessive connecting steps). Referee driven format examples: all skaters perform first element before moving on to the next and so on, or each skater performs all of the required elements before moving on to the next skater.

- To be skated on 1/3 to 1/2 ice.
- No music.
- **All elements must be skated in the order listed.**

Level	Time	Skating rules/standards
Snowplow Sam	1:00 max.	<ul style="list-style-type: none"> • March followed by a two-foot glide and dip • Forward two-foot swizzles, 2-3 in a row • Forward snowplow stop • Backward wiggles, 2-6 in a row
Basic 1	1:00 max.	<ul style="list-style-type: none"> • Forward two-foot glide and dip • Forward two-foot swizzles, 6-8 in a row • Beginning snowplow stop on two-feet or one-foot • Backward wiggles, 6-8 in a row
Basic 2	1:00 max.	<ul style="list-style-type: none"> • Forward one-foot glide, either foot • Scooter pushes, right and left foot, 2-3 each foot • Moving snowplow stop • Two-foot turn in place, forward to backward • Backward two-foot swizzles, 6-8 in a row
Basic 3	1:00 max.	<ul style="list-style-type: none"> • Beginning forward stroking showing correct use of blade • Forward ½ swizzle pumps on a circle, either clockwise or counter clockwise, 4-6 consecutive • Forward slalom • Beginning backward one-foot glide, either foot • Moving forward to backward two-foot turn on a circle
Basic 4	1:00 max.	<ul style="list-style-type: none"> • Backward one-foot glides, right and left • Forward outside edge on a circle, clockwise or counter clockwise • Forward crossovers, 4-6 consecutive, both directions • Beginning two-foot spin, 2-4 revolutions • Backward ½ swizzle pumps on a circle, one direction only
Basic 5	1:00 max.	<ul style="list-style-type: none"> • Backward outside edge on a circle, clockwise or counterclockwise • Backward crossovers, 4-6 consecutive, both directions • Advanced two-foot spin, 4-6 revolutions • Forward outside three-turn, right and left • Hockey stop
Basic 6	1:00 max.	<ul style="list-style-type: none"> • Forward inside three-turn, right and left • Bunny Hop • Forward spiral on a straight line, right or left • Beginning one-foot spin, 2-4 revolutions, optional free leg held position and entry • T-stop, right or left



EVENT: Basic Program Event: SNOWPLOW SAM - BASIC 6

Format: The skating order of the required elements is optional. The elements are not restricted as to the number of times the element is executed or length of glides, number of revolutions, etc., unless otherwise specified.

- To be skated on full ice.
- The skater may use elements from a previous level.
- A 0.2 deduction will be taken for each element performed from a higher level.

Level	Time	Skating rules/standards
Snowplow Sam	1:10 max.	<ul style="list-style-type: none"> • March followed by a two-foot glide and dip • Forward two-foot swizzles, 2-3 in a row • Forward snowplow stop • Backward wiggles, 2-6 in a row
Basic 1	1:10 max.	<ul style="list-style-type: none"> • Forward two-foot glide and dip • Forward two-foot swizzles, 6-8 in a row • Beginning snowplow stop on two-feet or one-foot • Backward wiggles, 6-8 in a row
Basic 2	1:10 max.	<ul style="list-style-type: none"> • Forward one-foot glide, either foot • Scooter pushes, right and left foot, 2-3 each foot • Moving snowplow stop • Two-foot turn in place, forward to backward • Backward two-foot swizzles, 6-8 in a row
Basic 3	1:10 max.	<ul style="list-style-type: none"> • Beginning forward stroking showing correct use of blade • Forward ½ swizzle pumps on a circle, either clockwise or counter clockwise, 4-6 consecutive • Forward slalom • Beginning backward one-foot glide, either foot • Moving forward to backward two-foot turn on a circle
Basic 4	1:10 max.	<ul style="list-style-type: none"> • Backward one-foot glides, right and left • Forward outside edge on a circle, clockwise or counter clockwise • Forward crossovers, 4-6 consecutive, both directions • Beginning two-foot spin, 2-4 revolutions • Backward ½ swizzle pumps on a circle, one direction only
Basic 5	1:10 max.	<ul style="list-style-type: none"> • Backward outside edge on a circle, clockwise or counterclockwise • Backward crossovers, 4-6 consecutive, both directions • Advanced two-foot spin, 4-6 revolutions • Forward outside three-turn, right and left • Hockey stop
Basic 6	1:10 max.	<ul style="list-style-type: none"> • Forward inside three-turn, right and left • Bunny Hop • Forward spiral on a straight line, right or left • Beginning one-foot spin, 2-4 revolutions, optional free leg held position and entry • T-stop, right or left



EVENT: Pre-Free Skate - Free Skate 6 Compulsory Event

Format: In simple program form, using a limited number of connecting steps, the skating order of the required elements is optional.

- To be skated on ½ ice.
- No music is allowed.
- The skater must demonstrate the required elements and may use any additional elements from previous levels.
- A 0.2 deduction will be taken for each element performed from a higher level.
- Time: 1:15 max

Level	Time	Skating rules/standards
Pre-Free Skate	1:15 max	<ul style="list-style-type: none"> • Forward inside open Mohawk from a standstill position (R to L and L to R) • Two forward crossovers into a forward inside Mohawk, step down and cross behind, step into one backward crossover and step to a forward inside edge, clockwise and counterclockwise • One-foot upright spin, optional entry and free-foot position (minimum three revolutions) • Mazurka • Waltz jump
Free Skate 1	1:15 max.	<ul style="list-style-type: none"> • Forward power stroking, 4-6 consecutive strokes • Backward outside three-turns, right and left • Upright spin, entry from backward crossovers - minimum 4-6 revolutions • Toe loop • Half flip jump
Free Skate 2	1:15 max.	<ul style="list-style-type: none"> • Alternating forward outside and inside spirals on a continuous axis (2 sets) • Backward inside three-turns, right and left • Beginning back spin, up to two revolutions • Half Lutz • Salchow jump
Free Skate 3	1:15 max.	<ul style="list-style-type: none"> • Alternating Mohawk/crossover sequence, right to left and left to right • Waltz three-turns, clockwise and counterclockwise • Advanced back spin with free foot in crossed leg position, min 3 revs • Loop jump • Waltz jump/toe loop or Salchow/toe loop jump combination
Free Skate 4	1:15 max.	<ul style="list-style-type: none"> • Forward power 3's, 2-3 consecutive sets, right or left • Sit spin - minimum three revolutions • Half loop jump • Flip jump
Free Skate 5	1:15 max.	<ul style="list-style-type: none"> • Backward outside three-turn, Mohawk (backward power three-turn), both directions • Camel spin - minimum three revolutions • Waltz jump-loop jump combination- • Lutz jump
Free Skate 6	1:15 max.	<ul style="list-style-type: none"> • Forward power pulls, right and left • Split jump or stag jump • Camel, sit spin combination - minimum of four revolutions total • Waltz jump, ½ loop, Salchow jump sequence • Axel jump



EVENT: Pre-Free Skate - Free Skate 6 Program Event

Format: The skating order of the required elements is optional. The elements are not restricted as to the number of times an element is executed, length of glides, number of revolutions, etc., unless otherwise stated. Connecting steps and transitions should be demonstrated throughout the program.

- To be skated on full ice.
- The skater must demonstrate the required elements and may use but is not required to use any additional elements from previous levels.
- A 0.2 deduction will be taken for each element performed from a higher level.
- Time 1:40 max.

Level	Time	Skating rules/standards
Pre-Free Skate	1:40 max	<ul style="list-style-type: none"> • Two forward crossovers into a forward inside Mohawk, step down and cross behind, step into one backward crossover and step to a forward inside edge, clockwise and counterclockwise • One-foot upright spin, optional entry and free-foot position (minimum three revolutions) • Mazurka • Waltz jump
Free Skate 1	1:40 max	<ul style="list-style-type: none"> • Forward power stroking, 4-6 consecutive strokes • Upright spin, entry from backward crossovers - minimum 4-6 revolutions • Toe loop jump • Half flip jump
Free Skate 2	1:40 max.	<ul style="list-style-type: none"> • Alternating forward outside and inside spirals on a continuous axis (2 sets) • Beginning back spin, up to two revolutions • Half Lutz • Salchow jump
Free Skate 3	1:40 max	<ul style="list-style-type: none"> • Alternating Mohawk/crossover sequence, right to left and left to right • Advanced back spin with free foot in crossed leg position, min 3 revs • Loop jump • Waltz jump-toe loop or Salchow-toe loop jump combination
Free Skate 4	1:40 max.	<ul style="list-style-type: none"> • Forward power 3's, 2-3 consecutive sets, right or left • Sit spin - minimum three revolutions • Half Loop jump • Flip jump
Free Skate 5	1:40 max.	<ul style="list-style-type: none"> • Backward outside three-turn, Mohawk (backward power three-turn), both directions • Camel spin - minimum three revolutions • Waltz-loop jump combination- • Lutz jump
Free Skate 6	1:40 max.	<ul style="list-style-type: none"> • Split jump or stag jump • Camel, sit spin combination - minimum of four revolutions total • Waltz jump, ½ loop, Salchow jump sequence • Axel jump



EVENT: Introductory Levels Compulsory Event

Format: In simple program form, using a limited number of connecting steps, the skating order of the required elements is optional.

- To be skated on ½ ice.
- No music is allowed.
- The skater must demonstrate the required elements and may use any additional elements from previous levels.
- A 0.2 deduction will be taken for each element performed from a higher level.
- *Skaters may have the option to skate one level higher in compulsories than their free skate program.*

Level	Time	Skating rules/standards
Beginner	1:15 max.	<ul style="list-style-type: none">• Waltz jump• ½ jump of choice• Forward two-foot or one-foot spin - minimum three revolutions (free leg position optional)• Forward or backward spiral
High Beginner	1:15 max.	<ul style="list-style-type: none">• Toe loop jump• Salchow jump• Forward scratch spin - minimum three revolutions• Forward or backward spiral



EVENT: Introductory Levels Free Skate Program

- Skaters will skate to the music of their choice.
- Level will be determined by the highest free skate test passed. Skaters may compete at the highest level they have passed, or skate up to one level higher.
- Minimum number of spin revolutions are in parentheses following the spin description. Revolutions must be in position.

Level	Jumps	Spins	Step Sequences	Qualifications
Beginner 1:40 Maximum	Max. 5 jump elements: <ul style="list-style-type: none"> • Jumps with no more than one-half rotation (front to back or back to front). • Max. 2 jump sequences • Max. 2 of any same jump 	Max. 2 spins: <ul style="list-style-type: none"> • Two upright spins, no change of foot, no flying entry (Min. 3 revolutions) 	Connecting moves and steps should be demonstrated throughout the program	Skaters may not have passed tests higher than U.S. Figure Skating Learn to Skate USA free skating badge tests
High Beginner 1:40 Maximum	Max. 5 jump elements: <ul style="list-style-type: none"> • Jumps with no more than one-half rotation (front to back or back to front including half-loop) • Single rotation jumps: Salchow and toe loop only. • Max. 2 jump combinations or sequences • Max. 2 of any same type jump 	Max. 2 spins: <ul style="list-style-type: none"> • Two upright spins, change of foot optional, no flying entry (Min. 3 revolutions) 	Connecting moves and steps should be demonstrated throughout the program	Skaters may not have passed tests higher than U.S. Figure Skating Learn to Skate USA free skating badge tests



EVENT: COMPULSORY MOVES (For Well Balanced and Test Track Skaters)

General event parameters:

- Elements skated on ½ ice
- Elements may be performed only once
- Music is not allowed

Level	Time	Skating rules/standards
No-Test	1:15 max.	<ul style="list-style-type: none">• Loop jump• Jump combination to include a toe loop (may not use a loop or Axel)• Solo spin - sit <u>or</u> camel spin - minimum three revolutions• Spiral sequence, must include a forward and backward spiral. Additional spirals and balance moves may be included.
Pre-Preliminary	1:15 max.	<ul style="list-style-type: none">• Toe Loop jump• Jump combination: single/single (no Axel)• Sit spin or camel spin - minimum three revolutions• Spiral sequence with one forward spiral and one backward spiral (any edge)
Preliminary	1:15 max.	<ul style="list-style-type: none">• Lutz jump• Jump combination: single/single (may include Axel)• Back upright spin - minimum three revolutions• Forward inside spiral



EVENT: WELL BALANCED PROGRAM FREE SKATE

General event parameters:

- Skaters may not enter both a Well Balanced Free Skate event and a Test Track Free Skate event at the same nonqualifying competition.
- Skaters will skate to the music of their choice.
- Level will be determined by the highest free skate test passed. Skaters may compete at the highest level they have passed, or skate up to one level higher.

Level	Time	Jumps	Spins	Step Sequences
No-Test	1:40 Maximum Vocal Music permitted	<p>Max. 5 jump elements:</p> <ul style="list-style-type: none"> • Single jumps, with the exception of the single Axel, are allowed • No single Axels, double jumps or triple jumps • Maximum of 2 jump combinations or sequences • Jump combinations limited to 2 jumps except that one 3-jump combination with a maximum of 3 single jumps is permitted • Jump sequences limited to a maximum of 3 single jumps <p>Half-loop is considered a listed jump with the value of a single loop when used in a sequence or combination</p>	<p>Max. 2 spins:</p> <ul style="list-style-type: none"> • Spins may change feet and/or position • Spins may start with a fly • Minimum 3 revs. <p>Spins must be of a different character (For definition see rule 4103E)</p>	<p>Step sequence*</p> <p>Must use one-half the ice surface</p> <p>Moves in the field and spiral sequences are permitted but will not be counted as elements.</p> <p>Jumps may be included in the step sequence</p>
Pre-Preliminary	1:40 Maximum Vocal music permitted	<p>Maximum of 5 jump elements:</p> <ul style="list-style-type: none"> • All single jumps, including single Axel, allowed • No double, triple or quadruple jumps allowed • Axel may be repeated once as a solo jump, as part of a jump combination or jump sequence. (maximum of 2 single Axels) • Number of single jumps is not limited provided the maximum number of jump elements allowed is not exceeded • Max. 2 jump combinations or sequences • Jump combinations are limited to 2 jumps except that one 3-jump combination with a maximum of 3 jumps is permitted. • Jump sequences limited to a maximum of 3 single jumps • ½ loop is considered a listed jump with the value of a single loop when used in a sequence or combination 	<p>Maximum of 2 spins:</p> <ul style="list-style-type: none"> • Spins may change feet and/or position. • Spins may start with a fly. • Minimum of 3 revolutions <p>These spins must be of a different character (For definition see Rule 4103 (E))</p>	<p>One step sequenced that must use ½ of the ice surface.</p> <p>Moves in the field and spiral sequences are permitted, but will not count as elements</p> <p>Jumps may be included in the step sequence</p>

Preliminary	1:40 Maximum Vocal music permitted	<p>Maximum of 5 jump elements:</p> <ul style="list-style-type: none"> • One must be an Axel or Waltz-jump type jump • All single jumps, including single Axel, allowed. Only 2 different jumps may be attempted (limited to double Salchow, double toe loop and double loop) • Double flip, double Lutz, double Axel, triple or quadruple jumps are not allowed • An Axel plus up to two different, allowable double jumps may be repeated once (but not more) as solo jumps or part of jump combinations or jump sequences • Number of single jumps is not limited provided the maximum number of jump elements allowed is not exceeded • Maximum 2 jump combinations or sequences • Jump combinations are limited to 2 jumps except that one 3-jump combination with a maximum of 2 double jumps and 1 single jump is permitted. • Jump sequences limited to a maximum of 3 single or double jumps • ½ loop is considered a listed jump with the value of a single loop when used in a sequence or combination 	<p>Maximum of 2 spins:</p> <ul style="list-style-type: none"> • Spins may change feet and/or position. • Spins may start with a fly. • Minimum of 3 revolutions <p>These spins must be of a different character (For definition see Rule 4103 (E))</p>	<p>One step sequenced that must use ½ of the ice surface.</p> <p>Moves in the field and spiral sequences are permitted, but will not count as elements</p> <p>Jumps may be included in the step sequence</p>
-------------	--	---	---	--



EVENT: Test Track Free Skate

General event parameters:

- Skaters may **not** enter both a Well Balanced Free Skate event and a Test Track Free Skate event at the same nonqualifying competition.
- Skaters will skate to the music of their choice. Vocal music is permitted at all levels.
- Level will be determined by the highest free skate test passed. Skaters may compete at the highest level they have passed, or “skate up” to one level higher.
- Minimum number of spin revolutions are in () following the spin description. Revolutions must be in position.
- The following deductions will be taken:
 - 0.1 from each mark for each technical element included that is not permitted in the event description.
 - 0.2 from the technical mark for each extra element included.
 - 0.1 from the technical mark for any spin that is less than the required minimum revolutions.

Level	Jumps	Spins	Step Sequences	Qualifications
Pre-Preliminary 1:40 max.	Maximum of 5 jump elements: <ul style="list-style-type: none"> • Jumps with not more than one-half rotation (<i>front to back or back to front including half-loop</i>) • Single rotation jumps: Salchow, toe loop and loop only • Maximum 2 jump combinations or sequences • Maximum 2 of any same type jump 	Maximum of 2 spins: <ul style="list-style-type: none"> • Two spins of a different nature, one position only. No change of foot, no flying entry (Minimum 3 revolutions) 	Connecting moves and steps should be demonstrated throughout the program.	Skaters may not have passed tests higher than U.S. Figure Skating pre-preliminary free skate test.
Preliminary 1:40 max..	Maximum of 5 jump elements: <ul style="list-style-type: none"> • Jumps with not more than one rotation (no Axels) • Maximum 2 jump combinations or sequences • Maximum 2 of any same type jump 	Maximum of 2 spins: <ul style="list-style-type: none"> • One spin in one position; no change of foot, no flying entry. (Minimum 3 revolutions) • One spin consisting of a front scratch to back scratch; exit on spinning foot not mandatory. (Min. 3 revolutions per foot) 	Connecting moves and steps should be demonstrated throughout the program.	Skaters must have passed at least the U.S. Figure Skating pre-preliminary free skate test, but may not have passed tests higher than the preliminary free skate test.



EVENT: Elements Adult 1-6, Pre-Bronze, and Bronze

Each skater will perform each element when directed by a judge or referee or have the option to perform one element at a time in the order listed below (no excessive connecting steps). Referee driven format examples: all skaters perform first element before moving on to the next and so on, or each skater performs all of the required elements before moving on to the next skater.

- To be skated on 1/3 to 1/2 ice.
- No music.
- All elements must be skated in the order listed.

<p>Adult 1</p> <ul style="list-style-type: none"> • Falling and Recovery • Forward Marching • Forward two-foot glide • Forward swizzle (4-6 in a row) • Forward snowplow stop - two feet or one foot 	<p>Adult 4</p> <ul style="list-style-type: none"> • Forward outside edge on a circle, right and left • Forward inside edge on a circle, right and left • Forward crossovers, clockwise and counterclockwise • Backward one-foot glides, right and left • Hockey stop, both directions
<p>Adult 2</p> <ul style="list-style-type: none"> • Forward skating across the width of the ice • Forward one-foot glides • Forward slalom • Backward skating • Backward swizzles, 4-6 in a row 	<p>Adult 5</p> <ul style="list-style-type: none"> • Backward outside edge on a circle, right and left • Backward inside edge on a circle, right and left • Backward crossovers, clockwise and counterclockwise • Forward outside three-turn, right and left • Beginning two-foot spin
<p>Adult 3</p> <ul style="list-style-type: none"> • Forward stroking using the blade properly • Forward half-swizzle pumps on the circle, 6 to 8 in a row, clockwise and counterclockwise • Backward skating to a long two-foot glide • Forward chasses on a circle, clockwise and counterclockwise • Backward snowplow stop, Right and Left 	<p>Adult 6</p> <ul style="list-style-type: none"> • Forward stroking with crossover end patterns • Backward stroking with crossover end patterns • Forward inside three-turn, right and left • T-stop • Lunge • Two-foot spin into one-foot spin
<p>Adult Pre-Bronze: Must have passed no higher than adult pre-bronze free skate test or pre-preliminary free skate test. Time: 1:40 maximum Refer to the current U.S. Figure Skating Rulebook #4600 for specific requirements.</p>	<p>Adult Bronze: Must have passed no higher than adult bronze free skate test or the preliminary free skate test. Time: 1:50 maximum Refer to the current U.S. Figure Skating Rulebook #4590 for specific requirements.</p>



Event: Free Skate Program Adult 1-6, Pre-Bronze, and Bronze

The skating order of the required elements is optional. The elements are not restricted to the number of times element is executed, or length of glides, number of revolutions, etc. unless otherwise stated. Connecting moves and steps should be demonstrated throughout the program.

- Vocal music is allowed.
- The skater must demonstrate the required elements and may use, but is not required to use, any additional elements from previous levels.
- A 0.2 deduction will be taken for each element performed from a higher level.
- Time 1:30+/-10 sec unless otherwise noted

<p>Adult 1</p> <ul style="list-style-type: none"> • Falling and Recovery • Forward Marching • Forward two-foot glide • Forward swizzle (4-6 in a row) • Forward snowplow stop - two feet or one foot 	<p>Adult 4</p> <ul style="list-style-type: none"> • Forward outside edge on a circle, right and left • Forward inside edge on a circle, right and left • Forward crossovers, clockwise and counterclockwise • Backward one-foot glides, right and left • Hockey stop, both directions
<p>Adult 2</p> <ul style="list-style-type: none"> • Forward skating across the width of the ice • Forward one-foot glides • Forward slalom • Backward skating • Backward swizzles, 4-6 in a row 	<p>Adult 5</p> <ul style="list-style-type: none"> • Backward outside edge on a circle, right and left • Backward inside edge on a circle, right and left • Backward crossovers, clockwise and counterclockwise • Forward outside three-turn, right and left • Beginning two-foot spin
<p>Adult 3</p> <ul style="list-style-type: none"> • Forward stroking using the blade properly • Forward half-swizzle pumps on the circle, 6 to 8 in a row, clockwise and counterclockwise • Backward skating to a long two-foot glide • Forward chasses on a circle, clockwise and counterclockwise • Backward snowplow stop, Right and Left 	<p>Adult 6</p> <ul style="list-style-type: none"> • Forward stroking with crossover end patterns • Backward stroking with crossover end patterns • Forward inside three-turn, right and left • T-stop • Lunge • Two-foot spin into one-foot spin
<p>Adult Pre-Bronze: Must have passed no higher than adult pre-bronze free skate test or pre-preliminary free skate test. Time: 1:40 maximum Refer to the current U.S. Figure Skating Rulebook #4600 for specific requirements.</p>	<p>Adult Bronze: Must have passed no higher than adult bronze free skate test or the preliminary free skate test. Time: 1:50 maximum Refer to the current U.S. Figure Skating Rulebook #4590 for specific requirements.</p>



Event: Jumps

General event parameters:

- Each skater will perform each element when directed by a judge or referee or perform jumps in a jump program (no additional elements allowed)
- Each skater will be allowed two attempts at each jump. The judges will select the better of the two jumps.
- To be skated on 1/3 to 1/2 ice
- No music
- All elements must be skated in the order listed
- Skaters must compete at the same level as their free skate events

Level	Time	Skating Rules/ Standards
Beginner	1:15 max	<ul style="list-style-type: none"> • Waltz jump (from backward crossovers) • 1/2 flip or 1/2 Lutz • Single salchow
High Beginner	1:15 max	<ul style="list-style-type: none"> • Waltz jump (from backward crossovers) • Single Salchow • Jump combination – Waltz jump + toe loop
No Test	1:15 max	<ul style="list-style-type: none"> • Single toe loop • Single loop • Jump combination – Any two 1/2 or single revolutions jumps (no axel)
Pre-Preliminary	1:15 max	<ul style="list-style-type: none"> • Single toe loop • Single flip • Jump combination – Any two 1/2 or single revolution jumps (no axel)
Preliminary	1:15 max	<ul style="list-style-type: none"> • Single flip • Single Lutz • Jump combination – Any single jump + single loop



EVENT: Spins Challenge

General event parameters:

- Spins may be skated in any order. Connecting steps are allowed, but will not be taken into consideration in scoring. Spins may not be repeated. Only required elements may be included.
- All events are skated on 1/2 ice.
- Minimum number of revolutions are noted in parentheses.

Level	Time	Skating rules/ Standards
Beginner	1:30 Max	<ul style="list-style-type: none"> • Upright one-foot spin (3) • Upright two-foot spin (3) • Sit spin (3)
High Beginner	1:30 Max	<ul style="list-style-type: none"> • Upright one foot spin (3) • Upright two foots spin (3) • Sit spin (3)
No Test	1:30 Max	<ul style="list-style-type: none"> • Upright one-foot spin (3) • Upright two-foot spin (3) • Sit spin (3)
Pre-Preliminary	1:30 Max	<ul style="list-style-type: none"> • Upright one foot spin (3) • Upright back- scratch spin (3) • Sit spin (3)
Preliminary	1:30 Max	<ul style="list-style-type: none"> • Forward scratch to back scratch (3) • Combination spin with no change of foot (4) • Sit spin (3)



SHOWCASE EVENTS:

Showcase events are open to skaters in Basic, Free Skate, Limited Beginner through Preliminary and Adult Bronze. Groups will be divided by number of entries and ages if possible. Skaters must enter at the same level as their free skate event or highest test level of skater’s in the group ensemble or production number. If a free skate event is not being entered, skaters must enter at their current test level or one level higher. Vocal music is permitted.

Show costumes are permitted, as long as they do not touch or drag on the ice. Props and scenery must be placed and removed by unaided singles and duet competitors within one minute and by unaided ensemble contestants within two minutes for setup and two minutes for removal. A 0.2 deduction will be assessed by the referee against each judge’s mark for each five seconds in excess of the time allowed for the performance, for handling props and scenery and for scenery assistance.

Performances will be judged from an entertainment standpoint, for theatrical qualities. Technical skating skills and difficulty will not be rewarded as such; however, skating must be the major element of the performance and be of sufficient quality to support the selected theatrical elements. Unintended falls, poorly executed skating elements and obvious losses of control will reduce contestant’s marks. Jump difficulty is not rewarded in showcase; therefore jumps, if choreographed, should be performed with style, flow and confidence. Theatrical elements evaluated will include energy, poise, acting, pantomime, eye contact, choreography, form/extension and the use of props and ice.

6.0 Judging will be used. Deductions will be made for skaters including technical elements not permitted in the event description.

* For specific guidelines regarding the conduct of Showcase competitions, refer to the Nonqualifying Showcase Guidelines posted on www.usfigureskating.org.

Showcase categories may include:

- Levels can be subdivided, if necessary, depending on entry numbers and event set up
- Dramatic entertainment: Showcase program utilizing intense emotional skating quality to depict choreographic theme.
- Light entertainment: Showcase program emphasizing such choreographic expressive qualities such as comedy, love and mime while incorporating skating skills.
- Duets: Theatrical/artistic performances by any competitors.
- Mini production ensembles: Theatrical performances by three to seven competitors.
- Production ensembles: Theatrical performances by eight to 30 skaters. Theater On Ice teams are eligible as production ensembles. NOTE: Skaters may enter only one each duet, mini production or production event.

LEVEL	ELEMENTS	QUALIFICATIONS	PROGRAM LENGTH
Basic 1-6	Elements only from Basic 1-6 curriculum	May not have passed any higher than Basic 6 level.	Time: 1:00 max.
Pre-Free Skate-Free Skate 6/ Beginner/ High Beginner/ Adult 1-6	3 jump maximum. ½ rotation jumps only, plus the following full rotation jumps: Salchow and toe loop.	May not have passed any official U.S. Figure Skating free skate tests.	Time: 1:30 max.
No Test/ Pre-Preliminary/ Adult Pre-Bronze	3 jump maximum. No Axels or double jumps permitted.	Must have passed no higher than U.S. Figure Skating Pre-Preliminary or Adult pre-Bronze free skate test.	Time: 1:30 max.
Preliminary/ Adult Bronze	3 jump maximum. Axels are permitted, but no double jumps allowed.	Must have passed no higher than U.S. Figure Skating Preliminary free skate or Adult Bronze test.	Time: 1:40 max.

Wisconsin Basic Skills Series

Mission Statement: To give Wisconsin skaters a chance to develop their USFS Basic Skills in a fun, competitive environment.

Skaters will have the chance to compete at twelve different clubs & arenas and earn points for a final standing. Awards will be presented to skaters with the highest point totals when they compete in at least two out of the twelve scheduled events. Skaters' point accumulation can be found at www.fscouncilwisconsin.org. Medals will be awarded at the final competition in the Series.

Series Point System

The Freeskating and Compulsory/Elements events in each of the Series Competitions will be eligible for accumulating points. Each event will have a maximum of 6 skaters. The system for scoring points for the final award will be as follows:

Place	Points
1	6
2	5
3	4
4	3
5	2
6	1

If an event has 2-6 skaters, the points will be awarded as if 6 skaters were in the group. If only one skater is in the group, that skater will be awarded 3 points. Points are accumulated for Compulsory and Freeskate events separately.

A skater may participate in either the element/compulsory events and/or freeskating events in any Wisconsin Basic Skills Series competitions to be eligible for accumulating points.

All skaters who participate in at least 2 of the 12 competitions in the following events:

- Basic Elements
- Basic Program with Music
- Test Track Compulsory
- Test Track Freeskate
- Well Balanced Compulsory
- Well Balanced Freeskate

Will be eligible to win an award with an overall total of points. Medals will be awarded (1-3 place) at each level. Jumps, Spins, Dance, Pairs, Artistic, Adult and Synchronized Team events will NOT earn points in the Series. Skaters moving to the next level during the Series will take their points with them.